

# GREATER KANSAS CITY TWO-CYLINDER CLUB

OCTOBER – NOVEMBER 2020

VOLUME 2020, ISSUE 3



**SEPTEMBER 5, 2020 AG HALL OF FAME PLOW DAY  
DON H., WES S., LLOYD M., & BOB A. PLOWED A  
COUPLE ACRES AT THE AG HALL OF FAME**

## From the Desk of the Club President:

This year has been a complete change from the normal for just about everything. We started out the year strong with the February meeting and then the Western Farm Show. It was about that time that that someone popped the clutch and we, as a Club, have been idling for the past 8 months. I hope that when it comes time to engage the clutch we don't find everything falls apart or that we get so excited that we pop the front wheels off the ground. I guess finding that right touch of engaging again will take some getting used to.

I am looking forward to bringing the schedule to a close this year with the November 1st meeting and Plow Day November 7th. Yes, you read that right. We are having a meeting again and all the details are on page 3 of the newsletter. It is also that time of year to dig through your basement, garage, shed, and/or barn to find your white elephant auction items. This is our only fundraiser this year that goes toward the bottom line of the Club. I would also like to announce that the next meeting we will have the election of officers. If you or someone you know would like to be the President of the Club, please speak up. I look forward to seeing each of you at the membership meeting in a few weeks. Until then, Putt-Putt on and stay safe.

*Justin Read*

## 2020 Club Officers

Listed below is the current elected officers for 2020:

President:	Justin Read	1st Vice President:	Jon Pirie
2nd Vice President:	Joe Meyer	3rd Vice President:	Lloyd Mesmer
Treasurer:	Jay Pruett	Secretary:	Justin Mooney
Historian:	Wes Storm		

Note : Wes Storm is our historian (and Trustee). If you have pictures of any club activities please send them to him at 1808 SW Bird Ct., Blue Springs, MO 64015-5314 or [waleye01@att.net](mailto:waleye01@att.net). It is important to put specifics regarding the event in with the pictures (Event, Date, People Present, and a Short Description).

## Dues for 2021

Speaking of club dues, they are \$25 a year and worth every penny. The award winning newsletter every few months and the great activities make it a real value. Please check the mailing label on your newsletter. If the label says "Paid Member 2020" or earlier at the top, then you will want to pay your 2021 dues soon to not miss anything (the cut-off date is the May-June newsletter mailing). If the mailing label is not correct please let the Treasurer know (913-302-1273 or [jay70nc@yahoo.com](mailto:jay70nc@yahoo.com)). We will be collecting dues throughout the year. If you can't be at the meeting you can send your dues (\$25) to Jay Pruett as listed below:

Jay Pruett - Treasurer  
GKC Two-Cylinder Club  
P.O. Box 14071  
Lenexa, Kansas 66285

**Trivia:** What was the first "John Deere" production tractor? What are the statistics? (Weight, cost, speed, engine specs, production numbers, and horsepower)? See Page 6 for the answer.

## Club Website and Newsletter

The club website <http://www.gkctcc.com/> counter was reset in July of 2012 (it currently reads around 18,500 visits). The Webmaster continues to do a great job of putting it together and keeping it up to date. The web site gives our club world wide recognition along with reaching prospective members. Checkout the articles, pictures, and more. We are looking for member stories for future issues of the newsletter. If you have any, please contact Secretary Justin Mooney at 2401 Queen Ridge Dr. Independence, MO 64055, 816-868-2318 email: [GKCTCC@outlook.com](mailto:GKCTCC@outlook.com)

**Facebook Page:** <https://www.facebook.com/GKCTCC>

## Upcoming Event News

### GKCTCC Meeting and White Elephant Auction -- November 3rd, 2019

The Salmon family has agreed to host the November 1, 2020 meeting and white elephant auction starting at 2:00 p.m. at the farm north of Creighton, MO. There will be a few changes to the format of this meeting due to the Novel Coronavirus: 1. Masks must be worn at all times. 2. A forehead temperature check will be done upon entering the building. 3. There will NOT be a snack/refreshment table. You are welcome to bring those items for your own consumption and we ask you to not share outside your family. 4. Seating will be in pairs and placed 6 feet apart from the next pair of seats. 5. Families will be required to sit together. 6. The auction will continue as normal with reasonable social distancing. Major topics to be discussed at the meeting will include: approval of the February meeting minutes, financial report, establish a 2021 budget committee, select a slate of club officers for 2021, Western Farm Show display, 2021 activities, etc. The Scholarship Raffle drawing will be a highlight of the meeting. There will be a presentation by the Vice Presidents on the Glen Ratzlaff Scholarship, the Duane "Spike" Spieker Scholarship and its next recipients. Members wanting to donate items for the auction are welcome to do so. As you know the auction is a fund-raiser for the club so look around and see what you could do without and bring it along. Just remember --- "someone's junk may be another person's treasure." We also want nice things for the auction. Thank you to the Salmon's for hosting the meeting.

**Don't forget Day Light Savings Time Ends Sunday Nov. 1st (2 AM), don't forget or you will be early to the meeting.**

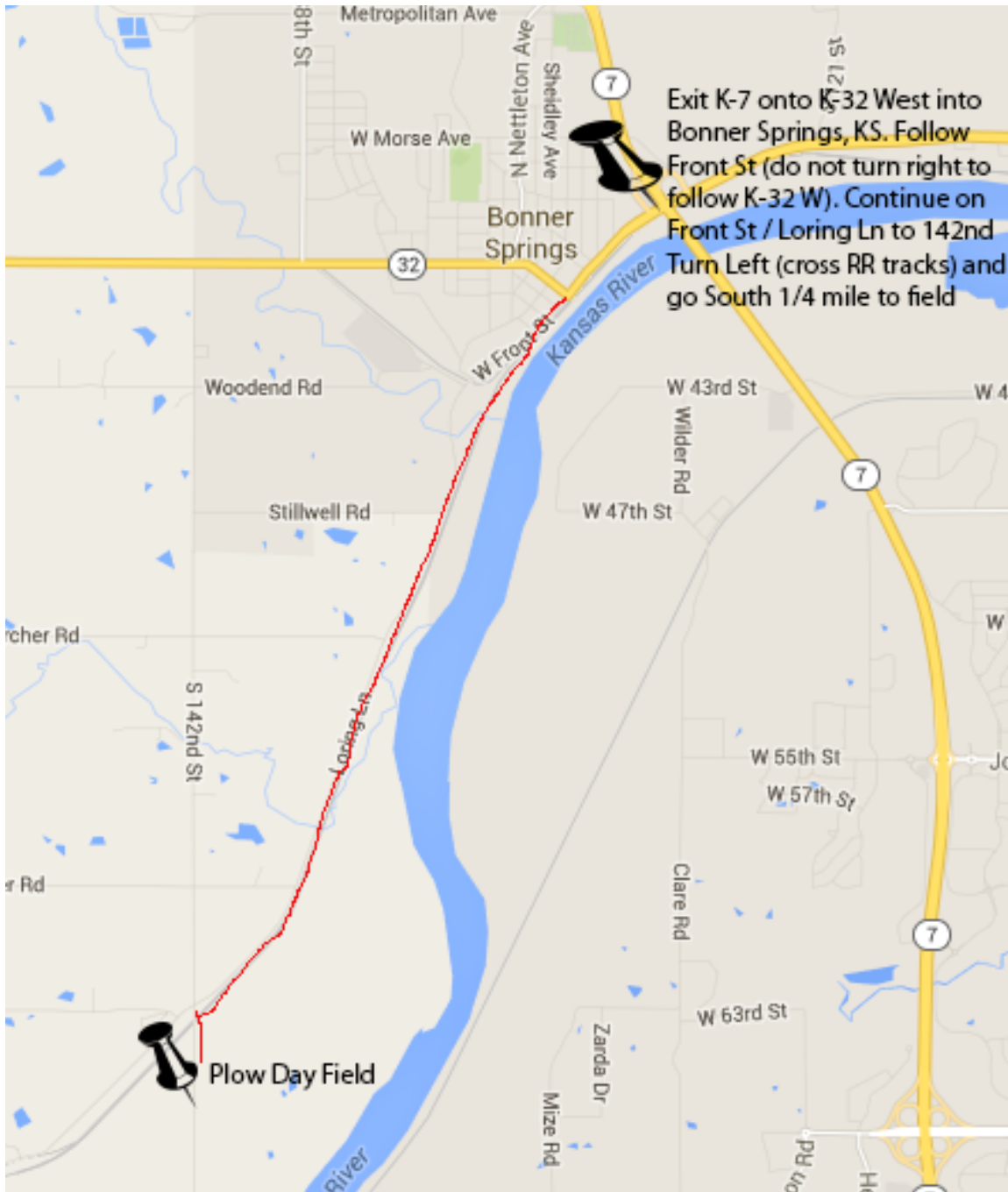


## Upcoming Event News—continued

### Fall Plow Day (Bonner Springs, KS) -- November 7, 2020, 8 AM

A plow day has been scheduled for November 7th outside Bonner Springs, KS (weather permitting). Lloyd says they should start plowing about 8 AM and that there is enough ground that they will be plowing well into the afternoon. Directions: Exit K-7 onto K-32 West into Bonner Springs, KS. Follow Front St (do not turn right to follow K-32 W). Continue on Front St / Loring Ln to 142nd. Turn Left (cross RR tracks) and go South 1/4 mile to field. Contact Lloyd Mesmer to RSVP or for more details: Home 913-441-1180 or Cell 913-904-8186

**Please contact Lloyd before you load the tractor and plow to make sure the field is ready.**





## Items Wanted / For Sale:

Items from the Western Farm Show **FOR SALE**  
**Year Make Model Price Name**  
 Contact info

**Early Deere 40U Orchard \$4500 Bryce York**  
**913-449-2629 Leave A Message**

? Deere R \$3500  
 620-364-9194 Kerry Trostle (Leroy, KS)

? Deere Convert Roll-A-Matic to Solid Front End  
 660-425-5765 Jerry Luther

1958 Deere 420T ?  
 913-328-2584 Sam Coffman

? Deere 4010 ?  
 816-304-2095 Roger Wilson (Liberty)

Items from the Western Farm Show **WANTED**  
**Year Make Model Contact**

**41-45 Deere B - Hand Start**  
**785-608-2704 Terry Wolford**

? Deere Model A - Need Help with Restoration  
 816-263-1446 Wayne Hoofer

? Deere 830 - Mechanic for Restoration  
 620-857-4133 Jerry Valentine (Ft. Scott)

? Deere 3 Point Pull Bars for 4000 - Right or Left  
 417-682-1903 Jack Purinton

## Currently No Other Items are Listed For Sale.

Wanted / For Sale Ads: Club Members \$1/issue or \$5/year,  
 Non-Members \$10/issue or \$50/year. (Save some money and  
 become a member) Contact Justin Read to place an ad, 22715 W  
 50th St., Shawnee, KS 66226 (816) 547-8608 or email to:  
[GKCTCC@outlook.com](mailto:GKCTCC@outlook.com)

Club Shirts: Interested in ordering a club shirt?  
 Call Don Hrabik at 913-262-5904 (Tax included.)  
 Shirt w/o pocket:

S-XL = \$15.00, XXL = \$17.00, XXXL = \$18.00

**Display Ads - Business Cards:** Club Members \$10/issue or  
 \$50/year, Non-Members \$20/issue or \$100/year (save some \$  
 and become a member). Contact Justin Mooney to place an ad,  
 2401 Queen Ridge Dr., Independence, MO 64055 (816) 868-  
 2318 or email to: [GKCTCC@outlook.com](mailto:GKCTCC@outlook.com)



## Eska Pedal Tractor Restoration



TRACTOR COLLECTOR

PEDAL TRACTOR  
 RESTORATION

**DONALD HRABIK**  
 6206 CRAIG RD.  
 MERRIAM, KS 66202

PHONE: 913.262.5904  
 EMAIL: [DHRABIK@KC.SUREWEST.NET](mailto:DHRABIK@KC.SUREWEST.NET)  
 WEBSITE: [WWW.TRACTORDON.COM](http://WWW.TRACTORDON.COM)



## Commercial and Residential Electrical and Wiring

**Briggs & Stratton Authorized Dealer**  
 Standby Generator Systems, Transfer Switches,  
 and other Power Protection Products



## Porter Electrical

Commercial and Residential Wiring

Bary Porter  
 1012 N. 7 Hwy  
 Pleasant Hill, MO 64080

(816) 540-3271  
 Fax: (816) 540-3211

## Tow Services

ICC & KCC  
 AUTHORITY

**Overland**  
**TOW SERVICE**  
**913-722-3505**  
**[Fax] 722-2707**

24  
 HOURS

3505 MERRIAM LANE • OVERLAND PARK, KANSAS 66203

## Car, Truck, Tractor, and Implement Tires



Firestone  
**GOODYEAR**

Kelly  
 Springfield

GENERAL  
 TIRE

## TIRE TOWN, INC.

NEW & USED TIRES ALL SIZES  
 TRUCK, PASSENGER & FARM  
 (21000 MIDLAND DR., SHAWNEE, KANSAS 66218)

**(913) 441-4500**  
 1-800-444-7209  
 FAX (913) 422-7670

**2020 (mini) SCHEDULE OF EVENTS:** (All dates and events are subject to change. Contact the President for verification).

Date	Event	More Info
Nov. 1	<b>GKCTCC Meeting and White Elephant Auction (Hosted by G.A. Salmon)</b>	
Nov. 7	Bonner Springs, Fall Plow Day.	Lloyd Mesmer 913-441-1180
Dec. 6	Oak Grove, MO. Christmas Parade	Wes 816-228-2660

**Trivia Answer:** The Dain All-Wheel Drive tractor was the first production model to carry the “John Deere” name. Some might argue... The Waterloo Boy was the first production model, but it did not carry the John Deere name. Others might argue.... That the 1923 John Deere Model “D” was the first John Deere “production” model. The John Deere Dain was manufactured from 1918 - 1919 and approximately 100 were built. The retail price was \$1700. The McVicker All-Fuel 4 cylinder engine produced 12 HP at the drawbar and 24 HP at the belt (3 - 14” bottom plow). The engine was 382 cubic inches and max speed was 800 RPM. The Dain weighed 4600 lbs, stood 57” tall, 150” long, and 76” wide. The Dain was an all-wheel drive (3 wheels) tractor with a 2 speed shift-on-the-move transmission. The picture below shows what was supposed to happen to the Frank Hansen Dain tractor serial number 191879, but as we know the its permanent home is now with Deere and Company (not the Ag Hall of Fame). The Hansen Dain made an appearance at the Ag Hall of Fame for the Farm Heritage Days in about 1990 or 1991. This particular Dain tractor’s history started like any other. Emil Obitz of Stockton, Minn., bought the tractor from a John Deere dealer in Winona, Minn., in 1918. He used it for about a decade until he traded it for a Model D in 1928. The receiving dealership’s owner, in turn, loaned the Dain to his brother, who used it for a year then parked it in the trees because of an engine malfunction. In 1930, Morris and Erwin Timm, who lived in rural Minnesota, purchased the Dain. The Timm’s bought it for the tractor’s chains, with which they wanted to repair a feed mill. Evidently, the brothers never got around to using the chains, and the Dain languished outdoors until 1962 when Frank Hansen purchased it for \$1,000. Hansen had known about the tractor’s whereabouts as a boy, and after he returned from military service, he researched and confirmed the special nature of the Dain. Hansen then restored the neglected Dain tractor and displayed it at antique tractor shows until he died. Hansen’s family auctioned the Dain tractor on eBay, but it didn’t sell because the reserve was never met. Deere and Company negotiated with the Hansen family to purchase the tractor for an undisclosed amount in July 2003.

